

INDUSTRIAL THERMOMETER (DIN CASE)

BIMETAL



IPS-TG-08

SPECIAL FEATURES

- STAINLESS STEEL CASE & STEM
- STEM LENGTH AVAILABLE FROM 50 MM
- BOTTOM / BACK / EVERY ANGLE ENTRY
- SILICON OIL FILLED (OPTIONAL)
- WITH OR WITHOUT THERMOWELL
- EXTERNAL ZERO ADJUSTMENT (OPTIONAL)
- STANDARD FOLLOWED EN 13190.

APPLICATIONS

CHEMICALS / REFINERY / FERTILIZER / PETROCHEMICALS
 PHARMACEUTICAL / POWER / CEMENT / SUGAR / FOOD &
 BEVERAGES / PULP & PAPER & ALLIED PROCESS INDUSTRIES
 WHICH ARE HAVING CORROSIVE MEDIA / ENVIRONMENT.

SPECIFICATIONS

STANDARD VERSION : 40 mm & 50 mm = Range up to 150 °C Max.,
 63 mm = Range up to 300 °C Max,
 80 mm, 100 mm, 125 mm & 150 mm = Range up to 500 °C Max.(For
 compound ranges, refer range table)



Accuracy	: Class 1 as per EN 13190
Ambient Temperature	: -25° C to 65° C
Operating Pressure	: 15 kg/cm ² (Without thermowell)
Over Range Limit	: 110 % of Full Scale
Stem Diameter	: 8 mm
Process Connection	: ½" BSP (M) Fixed

Case, Bezel & Clamp	: AISI 304 SS
Stem & Connection	: AISI 316 SS
Joints	: Tig argon arc welding
Sensing Element	: Bi - metal strip coiled

Protection	: IP 65
Dial	: Aluminum, black graduation on white background
Pointer	: Aluminum, black coloured, Slotted zero adjustable & Fixed for NS 40 mm, 50 mm & 63 mm
Zero adjustment	: Externally for mounting type 8 & 14, (Except NS 40 mm, 50 mm & 63 mm)
Window	: Sheet Glass
Gasket	: Neoprene

STANDARD VERSION : SILICON OIL FILLED

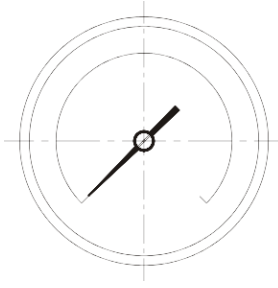
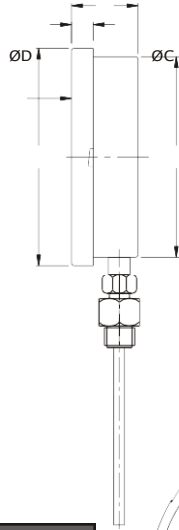
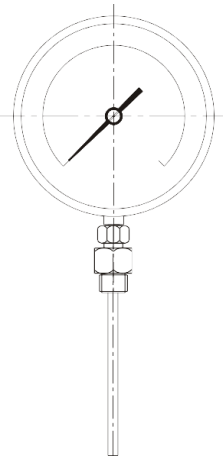
Accuracy	: Class 1 as per EN 13190
Ambient Temperature	: Maximum 65°C
Window	: Plexi Glass
Dampening Liquids	: Silicon Oil (Option QA & QZ)
Gasket & Filling Plug*	: NBR
Other Features	: Refer Specification of Standard Version

Nominal Range, Measuring Ranges & Limits of Error as per EN 13190

Nominal Range (°C)	Measuring Range (°C)	Limits of Error (± °C)
-20 to +40	-10 to +30	1
-20 to +60	-10 to +50	1
-20 to +120	-10 to +110	2
-30 to +30	-20 to +20	1
-30 to +50	-20 to +40	1
-30 to +70	-20 to +60	1
-40 to +40	-30 to +30	1
-40 to +60	-30 to +50	1
-100 to +60	-80 to +40	2
0 to 60	10 to 50	1
0 to 80	10 to 70	1
0 to 100	10 to 90	1
0 to 120	10 to 110	2
0 to 160	20 to 140	2
0 to 200	20 to 180	2
0 to 250	30 to 220	2.5
0 to 300	30 to 270	5
0 to 400	50 to 350	5
0 to 500	50 to 450	5
0 to 600	100 to 500	10

*Gasket & Filling plug of NBR. Refer Price List for Viton.

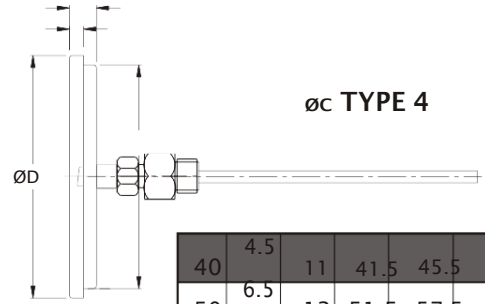




TYPE 2

NS	A	B	ØC	ØD	Approx. Wt.#
63	12.5	46	66.5	77.5	200.0
80	11	46	80	89.5	250.0
100	12.5	47	100	111	500.0
125	15	48	119	131	750.0
150	15	49	149	161	1000.0

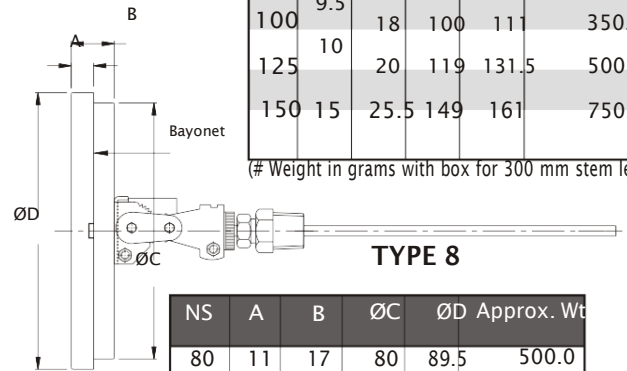
(# Weight in grams with box for 300 mm stem length.)



ØC TYPE 4

40	4.5	11	41.5	45.5	100.0
50	6.5	12	51.5	57.5	115.0
63	9.5	16	60	69.5	150.0
80	11	16	80	89.5	250.0
100	9.5	18	100	111	350.0
125	10	20	119	131.5	500.0
150	15	25.5	149	161	750.0

(# Weight in grams with box for 300 mm stem length.)



TYPE 8

NS	A	B	ØC	ØD	Approx. Wt
80	11	17	80	89.5	500.0
100	12.5	19	100	111	750.0
125	15	23	119	129	900.0
150	15	23	149	161	1000.0

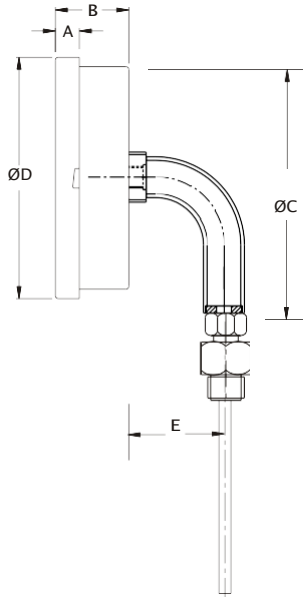
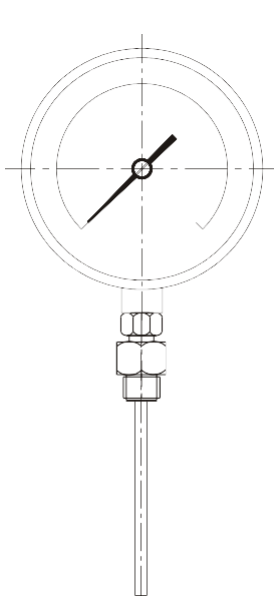
(# Weight in grams with box for 300 mm stem length.)

Notes : • Drawings are not to scale. • All Dimensions are in mm. • NS = Nominal Size.

RANGE, STEM OD & STEM LENGTH SELECTION TABLE

The following table indicates the minimum and maximum stem lengths in mm, per stem diameter per range. The lower values indicated are the minimum immersion length (below thread) for all type of threads. During stem length selection, please select between the limits mentioned below.

(Range) °C	Ø 6 mm/ 6.34 mm.	Ø 8, 9.5 & 10 mm.	Ø 12 mm.
-20 / 40	120 / 500	100 / 600	100 / 600
-20 / 60	100 / 500	80 / 600	80 / 600
-20 / 120	70 / 500	60 / 600	60 / 600
-30 / 30	120 / 500	100 / 600	100 / 600
-30 / 50	100 / 500	80 / 600	80 / 600
-30 / 70	90 / 500	60 / 600	80 / 600
-40 / 40	100 / 500	80 / 600	80 / 600
-40 / 60	90 / 500	80 / 600	80 / 600
-80 / 80	70 / 500	60 / 600	60 / 600
0 / 60	120 / 500	100 / 600	100 / 600
0 / 80	100 / 500	80 / 600	80 / 600
0 / 100	70 / 500	55 / 600	80 / 600
0 / 120	55 / 500	45 / 600	60 / 600
0 / 160	50 / 500	40 / 600	60 / 600
0 / 200	45 / 500	35 / 600	50 / 600
0 / 250	50 / 500	50 / 600	50 / 600
0 / 300	70 / 500	60 / 600	60 / 600
0 / 400	60 / 500	50 / 600	50 / 600
0 / 500	60 / 500	50 / 600	50 / 600



TYPE 14

NS	A	B	ØC	ØD	E	Approx. Wt.#
63	12.5	16	66.5	77.5	35	150.0
80	11	17	80	89.5	35	200.0
100	12.5	19	100	111	35	250.0
125	15	21	118.5	129	35	350.0
150	15	21	149	161	35	500.0

(# Weight in grams with box for 300 mm stem length.)

RANGE TABLE

Note : IP SPL offers National / International Scales like °C, °F & Dual Scale in °C & °F & Scales as per the requirement can be provided on request.

Following are the example tables for ranges in °C.

STANDARD RANGE

POSITIVE RANGE SINGLE SCALE IN °C									
0/60	0/80	0/100	0/120	0/160	0/200	0/250	0/300	0/400	0/500
COMPOUND RANGE SINGLE SCALE IN °C									
-20 / 40	-20 / 60	-20 / 120	-30 / 30	-30 / 50	-30 / 70	-40 / 40	-40 / 60	-80 / 80	

Note : Other Scales are available on request.

ACCESSORIES (* Refer Datasheet for Thermowells)

* Thermowell

HOW TO ORDER

BASIC MODEL

CODE

NOMINAL SIZE

TYPE OF MOUNTING

- 2 DIRECT BOTTOM ENTRY
- 4 DIRECT CENTER BACK ENTRY
- 8 EVERY ANGLE BACK ENTRY
- 14 BOTTOM ENTRY THROUGH ELBOW

	B	C	D	E	F	G	H
	40 mm	50 mm	63 mm	80 mm	100 mm	125 mm	150 mm

2	×	×	✓	✓	✓	✓	✓
4	✓	✓	✓	✓*	✓*	✓*	✓*
8	×	×	×	✓*	✓*	✓*	✓*
14	×	×	✓	✓*	✓*	✓*	✓*

* Available with external zero adjustment, Refer option RS.

PROCESS CONNECTION

	B	C	D	E	F	G	H
1BM 1/8" BSP(M) (Stem Dia. Max. 6.35 mm)	✓	✓	✓	×	×	×	×
1NM 1/8" NPT(M)* (Stem Dia. Max. 6.35 mm)	✓	✓	✓	×	×	×	×
2BM 1/4" BSP(M) (Stem Dia. Max. 6.35 mm)	✓	✓	✓	×	×	×	×
2NM 1/4" NPT(M)* (Stem Dia. Max. 6.35 mm)	✓	✓	✓	×	×	×	×
3BM 3/8" BSP(M) (Stem Dia. Max. 10 mm)	×	×	✓	✓	✓	✓	✓
4BM 1/2" BSP(M)(Standard) (Stem Dia. Max. 12 mm)	×	×	✓	✓	✓	✓	✓
4NM 1/2" NPT(M)* (Stem Dia. Max. 12 mm)	×	×	✓	✓	✓	✓	✓
4MM M 20 x 1.5 (Stem Dia. Max. 12 mm)	×	×	✓	✓	✓	✓	✓
4YN 1 1/2" TRICLOVER** (Stem Dia. Max. 12 mm)	×	×	✓	✓	✓	✓	✓

* Not recommended for Revolving/ Swivel connections.

** Without clamp, gasket & bottom mating part.

Note : Connections like Metric/ PT/ PF/ Flaired/ UNF/ G/ R etc can be provided on request.

PROCESS CONNECTION TYPE

(* Welded with stem / case & not suitable for taper threaded connections)

ZI ADJUSTABLE	ZJ FIXED (Standard)*	KJ REVOLVING / SWIVEL
---------------	----------------------	-----------------------

STEM DIAMETER

1U 6 mm	2M 6.35 mm	2C 8 mm (Standard)	2I 9.5 mm	2J 10 mm	2K 12 mm
---------	------------	--------------------	-----------	----------	----------

STEM LENGTH (Below thread Max. 600 mm)

PLEASE SPECIFY IN mm (REFER SCALE FOR MINIMUM & MAXIMUM STEM LENGTHS)

RANGE

REFER RANGE TABLE

OPTIONAL EXTRAS (* APPLICABLE FOR NS 100 mm & ABOVE)

PS AISI 316 SS CASE & BEZEL (For NS 100 mm & above)*#	RS EXTERNAL ZERO ADJUSTMENT* [EXCEPT NS 40 mm, 50 mm & 63 mm (MOUNTING TYPE 2)]
PW FIVE POINT CALIBRATION CERTIFICATE (FOR MEASURING RANGE)	RX SHATTERPROOF / SAFETY GLASS*
QA DAMPENING LIQUID SILICON OIL (UP TO 200°C)**	RZ TOUGHENED GLASS*
QZ DAMPENING LIQUID SILICON OIL (UP TO 300°C)**	SX SS TAG PLATE
RH CUSTOM DESIGNED DIAL	
SW DIAL TAG MARKING*	
GH MATERIAL TEST CERTIFICATES##	

**Gasket & Filling plug of NBR. Refer Price List for Viton. (# Consult factory for minimum order quantity & delivery.)

MATERIAL TEST CERTIFICATES WILL BE PROVIDED FOR WETTED PARTS ONLY WITH CHEMICAL COMPOSITION TESTING. FOR OTHERS, PLEASE CONSULT FACTORY.

Note : Specifications and dimensions given in this product catalogue represents the state of engineering at the time of printing.

Modifications may take place and materials specified may be replaced by others without prior notice.

IPS-TG-08

X

X

XXX

XX

XX

100 mm

0/100°C

XX